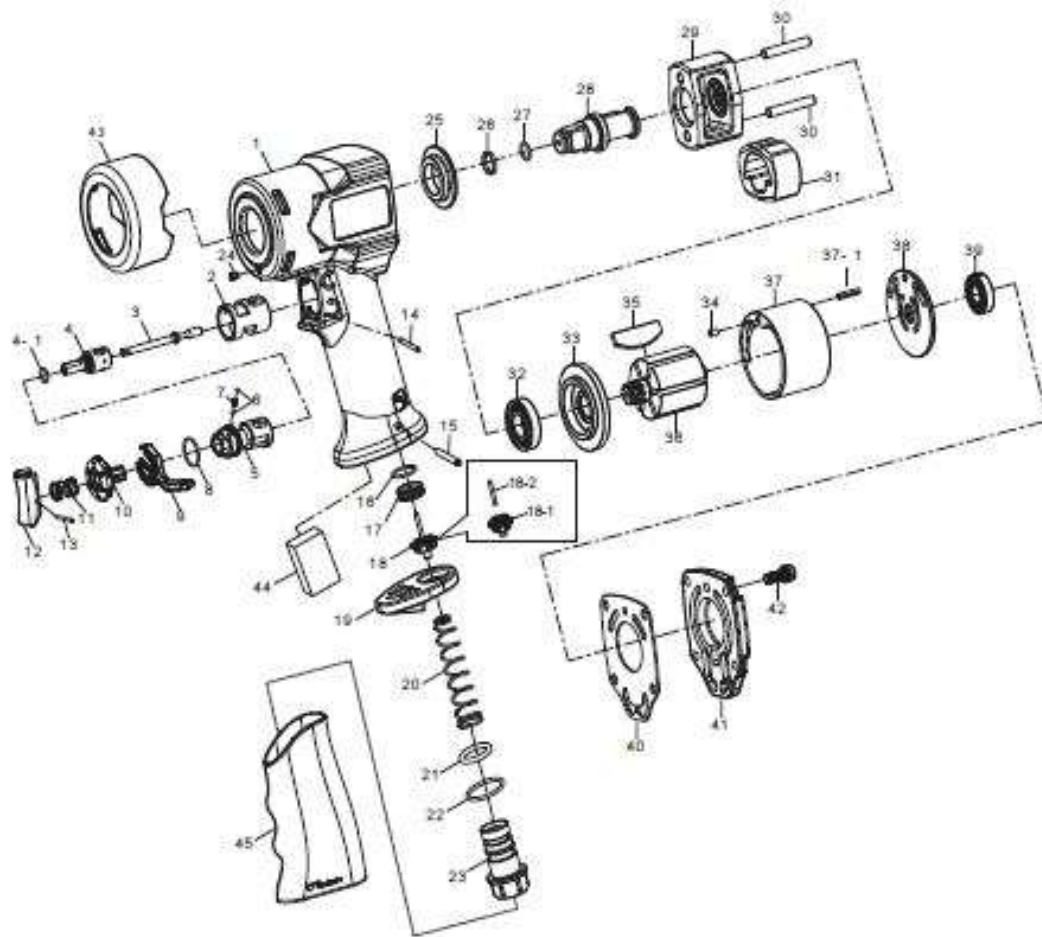


# LT88

## AVVITATORE PNEUMATICO 1/2"



INDEX NO.	DESCRIPTION	REQ'D NO.	INDEX NO.	DESCRIPTION	REQ'D NO.
★ 1	Motor Housing Assembly ( Incl.2,25 )	1	23	Air Inlet	1
• 2	Throttle Valve Seat	1	• 24	Grease Fitting	1
3	Valve Stem	1	• 25	Bushing	1
4	Throttle Valve	1	26	Socket Retainer	1
4-1	O-Ring	1	27	O-Ring	1
5	Reverse Valve	1	28	Standard Anvil	1
6	Steel Ball	2	29	Hammer Frame	1
7	Spring	1	30	Hammer Pin	2
8	O-Ring	1	31	Hammer	1
9	Reverse Knob	1	32	Ball Bearing	1
10	Reverse Valve	1	33	Front End Plate	1
11	Spring	1	34	Spring Pin	1
12	Trigger	1	35	Rotor Blade	6
13	Spring Pin	1	36	Rotor	1
14	Pin	1	37	Cylinder	1
15	Spring Pin	1	37-1	Spring Pin	1
16	O-Ring	1	38	Rear End Plate	1
17	Throttle Valve Seat	1	39	Ball Bearing	1
★ 18	Throttle Valve Assembly ( Incl.18-1,18-2 )	1	40	Gasket	1
• 18-1	Throttle Valve	1	41	Backhead	1
• 18-2	Throttle Valve Pin	1	42	Screw	4
19	Exhaust Deflector	1	43	Rubber Grip	1
20	Spring	1	44	Muffler Element	1
21	O-Ring	1	45	Rubber Grip ( Option )	1
22	O-Ring	1	TK	Tune-Up Kit ( Incl.4-1,6,7,8,11,21,22,26,27,35 ( 6 ),40 )	1

★ Must be Purchased in Assembly Set

• Recommended not to be purchased alone due to assembly difficulty